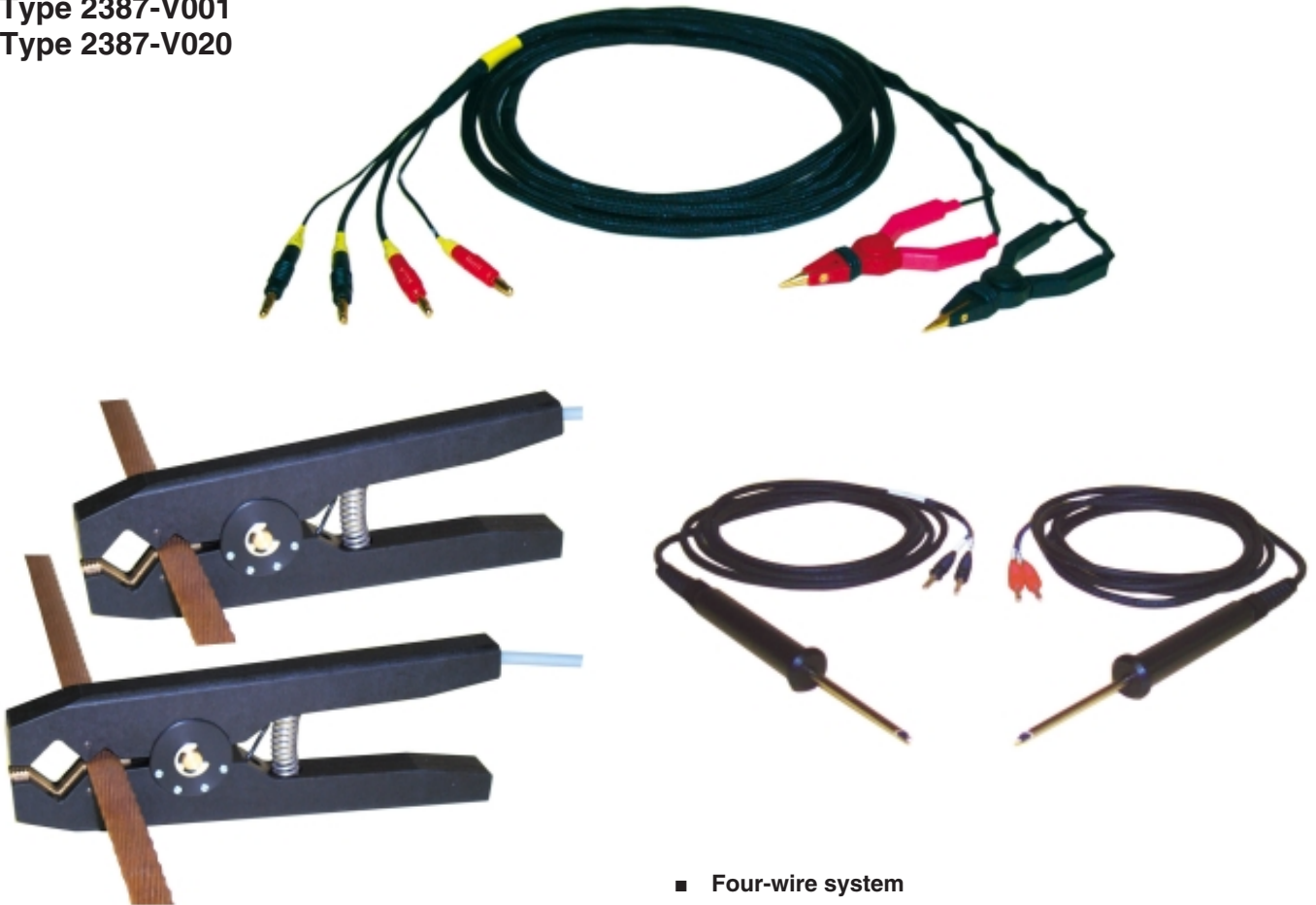


KELVIN Test Tongs and KELVIN Test Probes

Type 2385-V001
Type 2385-V020
Type 2386-V001
Type 2387-V001
Type 2387-V020

Code:	2385 E
Manufacturer:	burster
Delivery:	ex stock
Warranty:	12 months
Issue:	1.10.2002

2385-E



- Four-wire system
- Contact profiles for a multitude of applications
- Widest possible test sample diameter range

Applications

Particular attention is to be paid to the contact when assuring low value resistors of any kind. Poor contacts are generally synonymous with a considerable measurement error. The Kelvin test tongs and Kelvin test probes offer a multitude of measurement possibilities for a wide range of applications. They guarantee a fault-free and simple 4-pole connection to the device being tested. In connection with the RESISTOMAT® digital ohmmeter as well as other generally available milli- and micro-ohmmeters, these test tongs prove to be a rational and measurement quality improving accessory.

Description

All of the Kelvin test tongs and Kelvin test probes described operate on a four-wire system. The contact on each of the two clip faces is insulated against the opposing contact. One contact is for current supply, the other one is the potential tap. The system used means that any conduction resistivity in either the branch circuit or the voltage tap has no influence on the measured result.

Type 2386 test tongs are constructed of solid plates. This unbreakable material is suitable for heavy duty applications such as for testing bays in the cable industry. Kelvin test probes are constructed with a turned stainless steel and handles. The outer contacting and inner potential tap points are insulated against each other. The inner potential tap points are spring mounted.

Designs

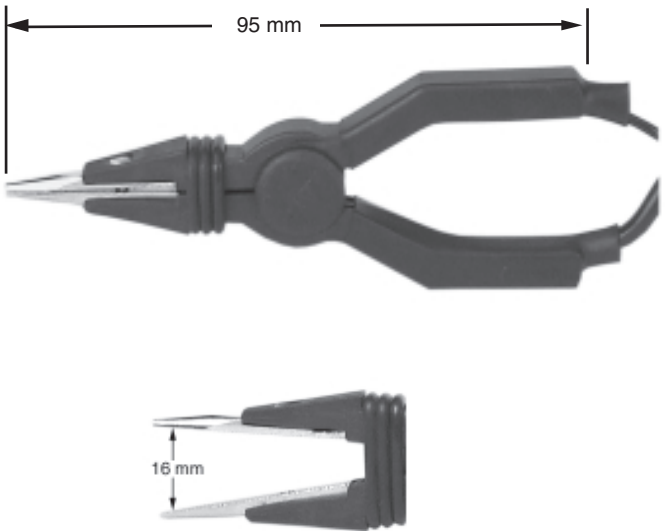
Kelvin Test Tongs Type 2385-V001

These test tongs are ideal for resistance tests on small components and are gold-plated which helps to retain lower contact resistance. The supply leads are 3 m long and fitted with banana plugs at the end.



Kelvin Test Tongs Type 2385-V020

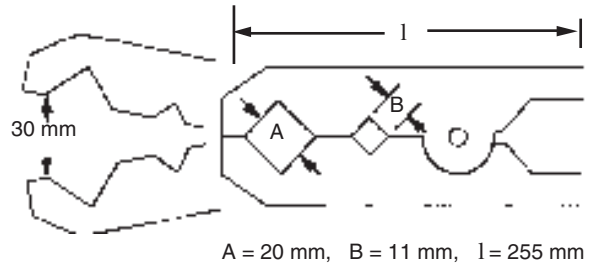
As type 2385-V001, however fitted with a 5-pin connector (suitable for RESISTOMAT® type 2329) 3 m length.



Kelvin Test Tongs Type 2386-V001

These test tongs are used for the measurement of ohmic resistances in test bays of cable drums ready for dispatch as well as various test samples in production plants or test laboratories.

When using different profiles in the contacting unit it is possible to make contact on test sample cross-sections from 1 to 1000 mm². The opening angle of the tongs and the form of the contacting profiles also permit special applications such as measurement on heavy duty transformers. The fitted supply leads are 10 m long with banana plugs.



Kelvin Test Probe Type 2387-V001

These were specially designed for contacting low-impedance test samples where contacting with test tongs is not possible (countersunk terminal lugs on electro motors, conductivity measurements on printed conductors, for example). The points are made of hardened steel, guaranteeing a long service life. The supply leads are 3 m long and fitted with banana plugs at the end.

Kelvin Test Probe Type 2387-V020

As type 2387-V001, however fitted with a 5-pin connector (suitable for RESISTOMAT® type 2329).



Which KELVIN connecting cable fits which RESISTOMAT® ?
Check the following table:

Type	2302 / 2304 / 2305 2318 / 2319 / 2323	2329
Tongs	2385-V001 2386-V001	2385-V020
Probe	2387-V001	2387-V020

Order Information

- Kelvin test tongs **type 2385-V001**
- Kelvin test tongs **type 2385-V020**
- Kelvin test tongs **type 2386-V001**
- Kelvin test probe **type 2387-V001**
- Kelvin test probe **type 2387-V020**